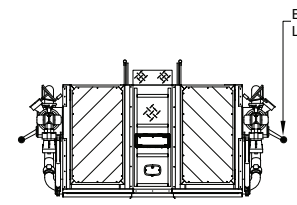
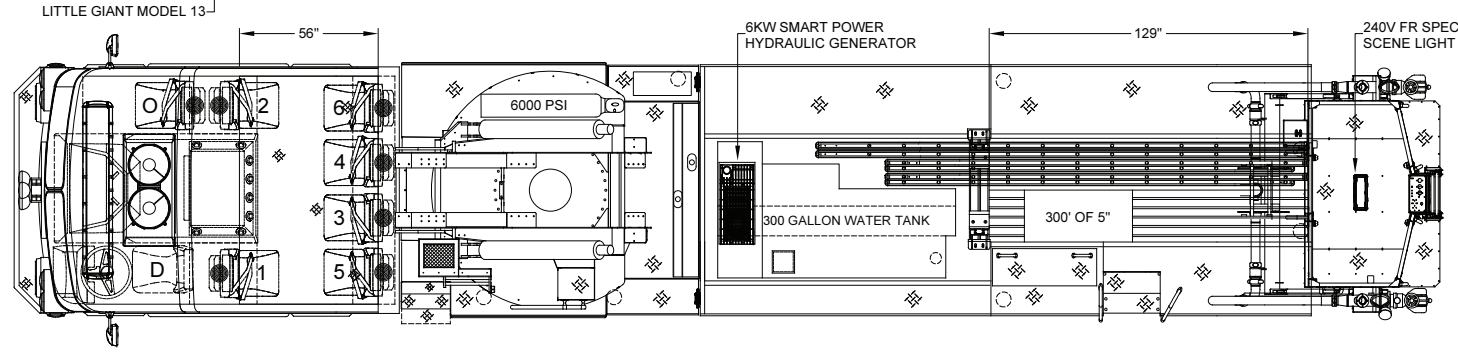


LADDER CHUTE
(2) 24' 2-SEC
(2) 16' ROOF
(1) 35' 2-SEC

12V FIRETECH FLOOD WORK LIGHTS



TWO TONE CAB
GRAY OVER RED
PAINT BREAK #1



12V FIRETECH 3-PIECE BROW LIGHT

WHELEN FREEDOM IV 72" LIGHT BAR

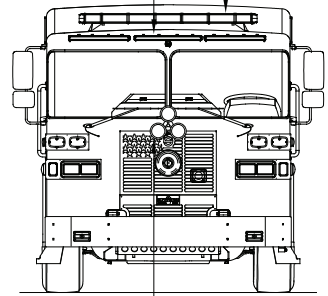
120V KUSSMAUL SHORELINE INLET SUPER 20 AUTO-EJECT OLED DISPLAY

12V FR SPECTRA SCENE LIGHTS

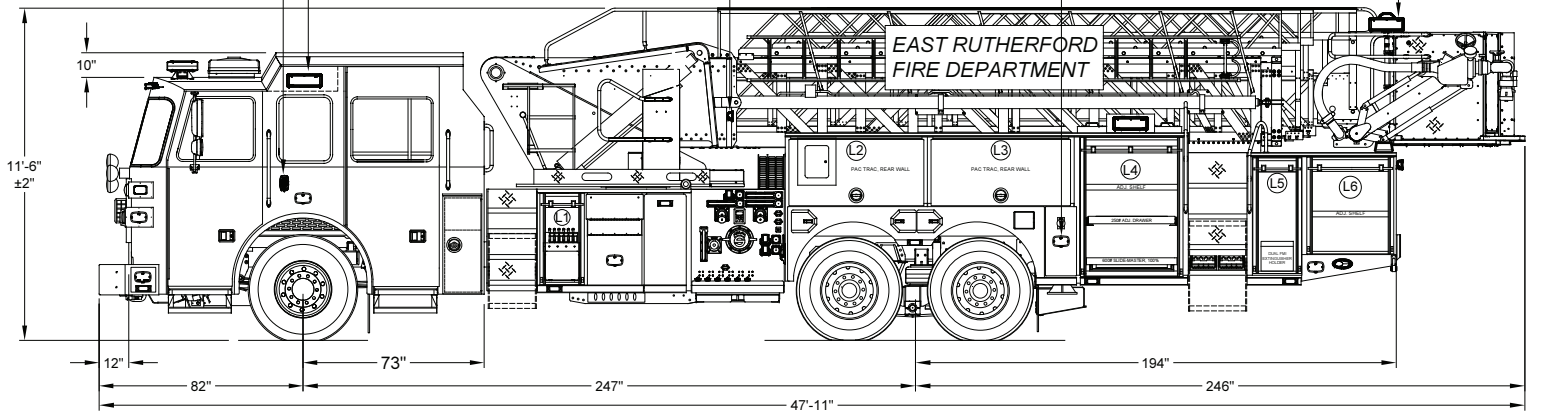
12V FIRETECH AERIAL SPOTLIGHTS

WHELEN M6 WARNING LIGHTS

240V FR SPECTRA TELE LIGHTS



ROTO-RAY



DOOR OPENINGS			COMPARTMENT DIMENSIONS		
COMPT.	HEIGHT	WIDTH	HEIGHT	WIDTH	DEPTH
L1	31 13/16	13 7/16	38 1/2	20 5/16	19 7/8
L2	23	33 1/4	27 1/2	41 1/2	12 1/8
L3	23	50 1/4	27 1/2	58	12 1/8
L4	48 1/2	38 3/4	56 1/2	45 3/4	26 1/2
L5	40 1/2	15 1/8	48 1/2	22	26 1/2
L6	32 1/8	30 7/8	40 1/8	34 3/4	26 1/2

DOOR OPENINGS			COMPARTMENT DIMENSIONS		
COMPT.	HEIGHT	WIDTH	HEIGHT	WIDTH	DEPTH
R1	31 13/16	33 7/16	38 1/2	40	27 1/2
R2	23	33 1/4	27 1/2	41 1/2	26 1/2
R3	23	50 1/4	27 1/2	58	26 1/2
R4	48 1/2	38 3/4	56 1/2	45 3/4	26 1/2
R5	48 1/2	38 3/4	56 1/2	45 3/4	26 1/2
R6	32 1/8	30 7/8	40 1/8	34 3/4	26 1/2

DOOR OPENINGS			COMPARTMENT DIMENSIONS		
COMPT.	HEIGHT	WIDTH	HEIGHT	WIDTH	DEPTH
A1	9 1/8	24 1/2	9 7/8	26	88

TOTAL COMPARTMENT VOLUME - 284.53 CU.FT.

DIMENSIONS SHOWN ON THIS DRAWING ARE APPROXIMATE AND ARE SUBJECT TO MINOR DEVIATIONS DURING CONSTRUCTION.

IN THE EVENT OF A DISCREPANCY BETWEEN THE SUTPHEN SPECIFICATIONS AND DRAWING, THE SUTPHEN SPECIFICATIONS SHALL PREVAIL.

DRAWING IS FOR REFERENCE ONLY. SOME ITEMS PROPOSED MAY NOT BE SHOWN OR NOTED.

CUSTOMER APPROVAL

NAME: _____

TITLE: _____

DATE: _____

REV	DESCRIPTION	BY	DATE
E	REFERENCE SHOP ORDER CHANGE DOCUMENT ON SHARED DRIVE	TF	11/29/2023
D	REFERENCE SHOP ORDER CHANGE DOCUMENT ON SHARED DRIVE	TF	10/18/2023
C	REFERENCE SHOP ORDER CHANGE DOCUMENT ON SHARED DRIVE	TF	10/10/2023
B	REFERENCE SHOP ORDER CHANGE DOCUMENT ON SHARED DRIVE	TF	10/09/2023

DRAWN BY:
T. FAHOM

DATE:
09/29/2021

MFG. FACILITY:
DUBLIN

SUTPHEN

EAST RUTHERFORD FIRE DEPARTMENT
EAST RUTHERFORD, NJ

SPH100 AERIAL PLATFORM

HS-7575